

OLDBURY PLACE

Tucked away on a quiet and hidden cobbled mews just off Marylebone High Street, you'll find impeccably crafted mews houses arranged over 5 floors.

Housed within London's oldest and most famous lock workshop, the mews houses at Oldbury Place are a truly fascinating addition to the Marylebone neighbourhood. Set amongst a cobbled street of listed buildings and itself a building of merit in the conservation area, 29-31 will retain the original fabric of the Bramah mews to create a totally unique collection of houses.



INTERIORS

Light, modern and spacious interiors. Earthy yet luxurious materials – oak, timber and natural marbles – are accented by brass and bronze to stunning effect.

The interiors at Oldbury Place are designed by leading studio Stiff + Trevillion, an award-winning design practice who have collaborated with an impressive array of clients including Selfridges, Mark Hix restaurants and Innocent. Each house boasts its own specification and layout, though all of the designs take creative inspiration from the building's illustrious history, referencing its industrial fabric in the beautiful metal work details, remarkable steel stairs, bronze ironmongery and joinery trims. This simple and honest materiality is complemented by a suite of truly luxurious finishes, adding a refinement that elevates the building to accommodate today's highly prized loft-style living.



KITCHENS

The kitchens at Oldbury Place are of an impeccable standard, with exceptional fitted appliances arranged to create a seamless link between cooking, dining and entertaining. Concrete effect flooring reflects the loft-style living you'll enjoy throughout the houses, while outstanding feature lighting lends an inviting warmth to the space.

OLD BUR Y PLACE
M A R Y L E B O R N E



OLDBURY PLACE
MAYLEBONE

BEDROOMS

The beautifully light and airy bedrooms are a true sanctuary at Oldbury Place, with a refined simplicity in every detail. Bespoke timber wardrobes and ironmongery keep the clutter behind closed doors, while a cool timber floor harmonises perfectly with the light and bright walls.



FLOORPLANS

No.29

GIA 2,209 sqft

A four bedroom house with a gym or home cinema and courtyard.

Cinema

12'0" x 24'3"
3.65m x 7.40m

Kitchen/Dining

12'8" x 24'4"
3.85m x 7.41m

Living Room

14'2" x 20'10"
4.33m x 6.35m

Bedroom 1

12'2" x 9'10"
3.70m x 3.01m

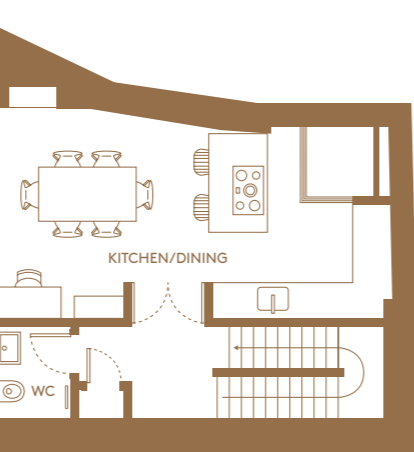
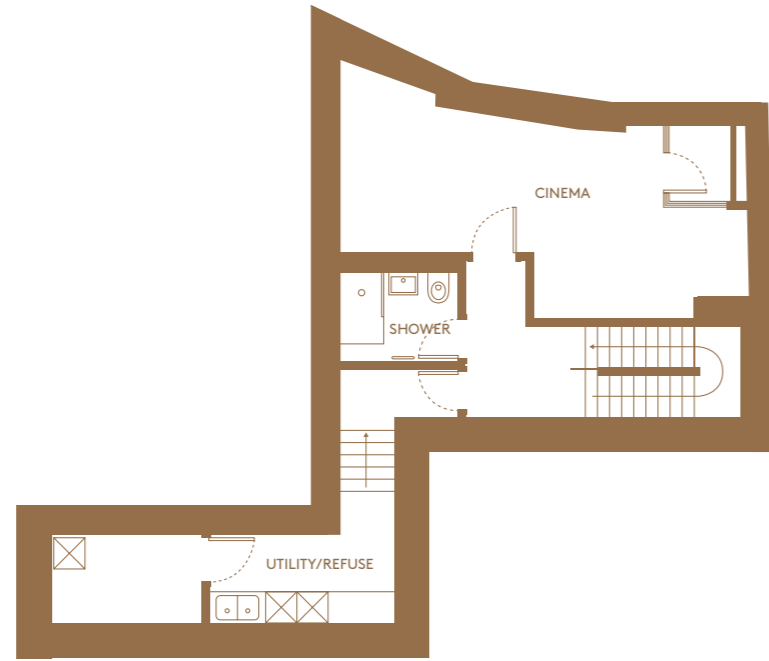
Bedroom 2

16'3" x 9'2"
4.96m x 2.80m

Master Bedroom

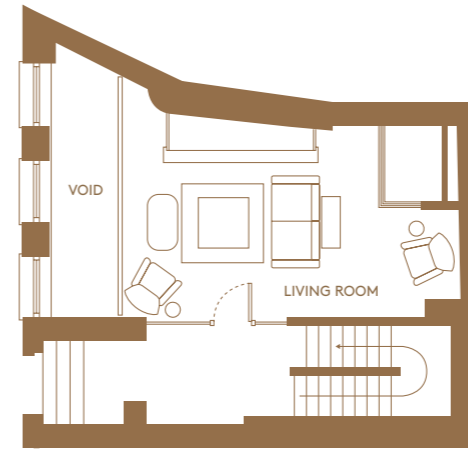
11'9" x 20'7"
3.58m x 6.29m

BASEMENT LEVEL

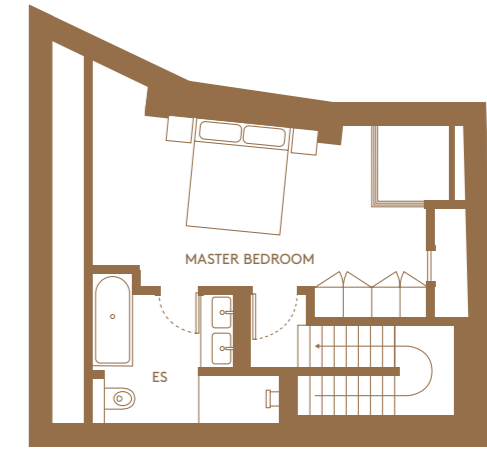


LOWER GROUND FLOOR

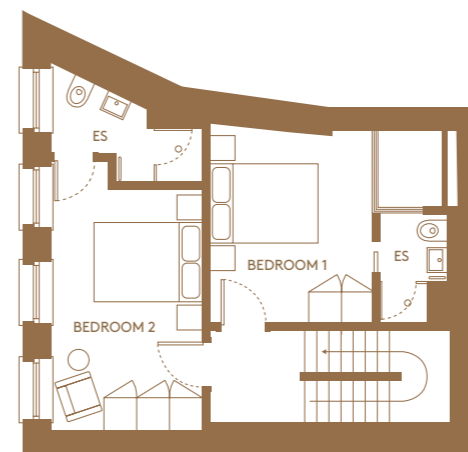
GROUND FLOOR



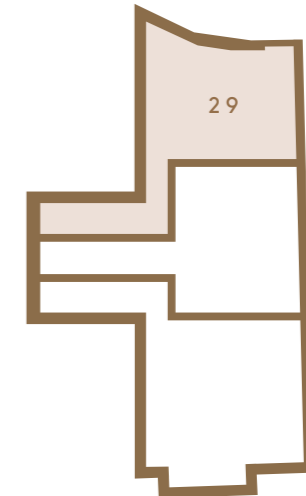
SECOND FLOOR



FIRST FLOOR



LOCATOR



FLOORPLANS

No.30

GIA 2,925 sqft

A four bedroom house with a gym or home cinema and courtyard.

Cinema

11'3" x 19'10"
3.43m x 6.05m

Kitchen/Dining

17'6" x 24'5"
5.34m x 7.45m

Gym

18'4" x 9'8"
5.59m x 2.95m

Living Room

21'7" x 18'0"
5.45m x 6.35m

Bedroom 1

12'6" x 11'9"
3.82m x 3.59m

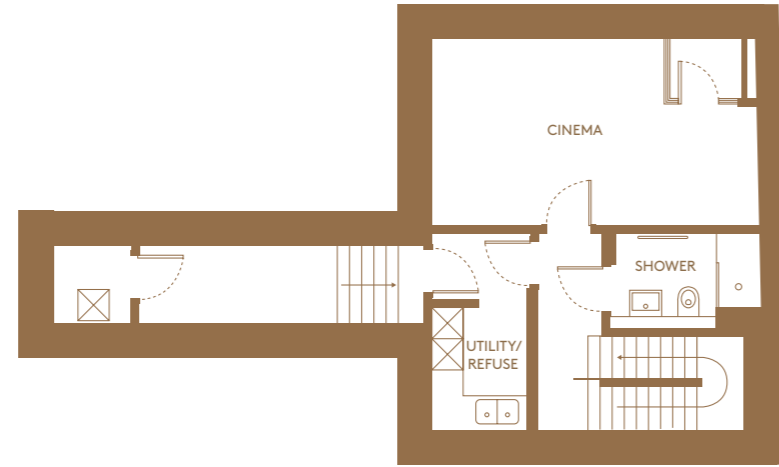
Bedroom 2

11'4" x 15'7"
3.46m x 4.75m

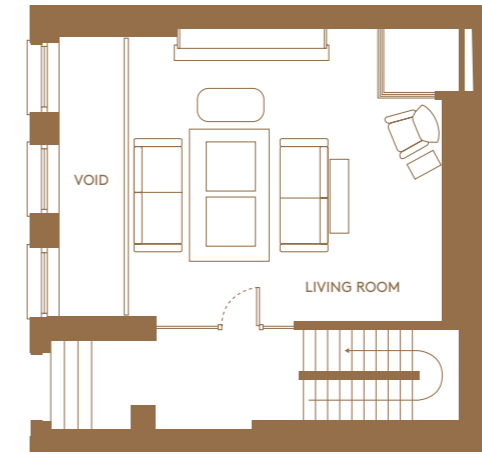
Master Bedroom

17'8" x 18'10"
5.39m x 5.73m

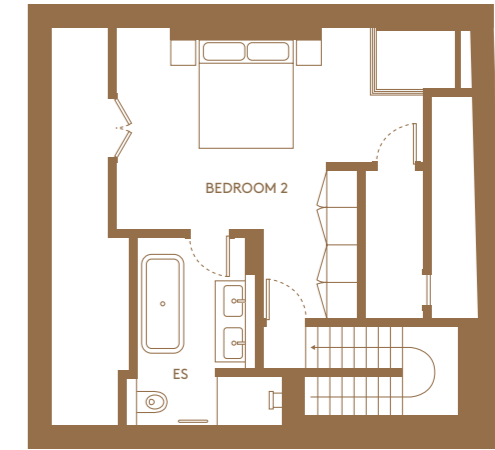
BASEMENT LEVEL



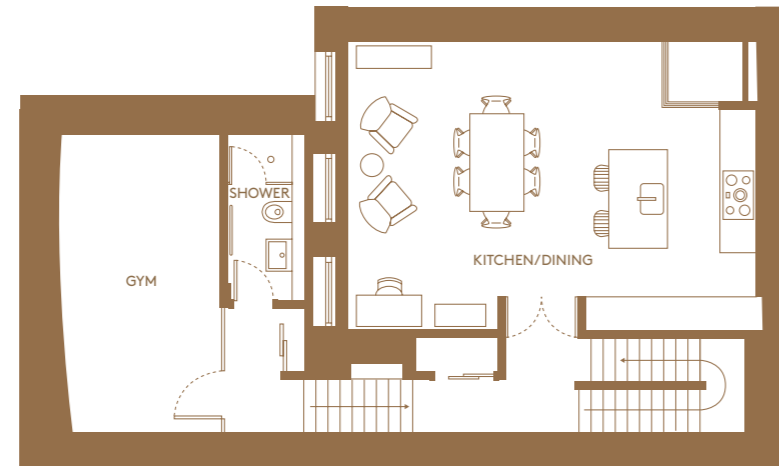
GROUND FLOOR



SECOND FLOOR



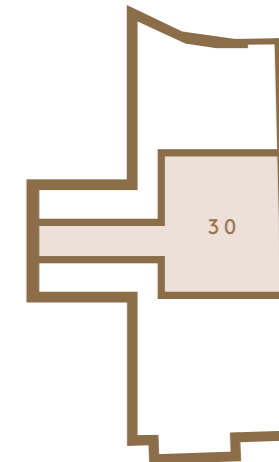
LOWER GROUND FLOOR



FIRST FLOOR



LOCATOR



FLOORPLANS

No.31

GIA 3,000 sqft

A four bedroom house with a gym or home cinema and courtyard.

Study/Bed
7'4" x 11'6"
3.34m x 3.08m

Gym/Cinema
13'5" x 20'2"
4.09m x 6.16m

Kitchen/Dining
25'1" x 21'10"
6.39m x 7.74m

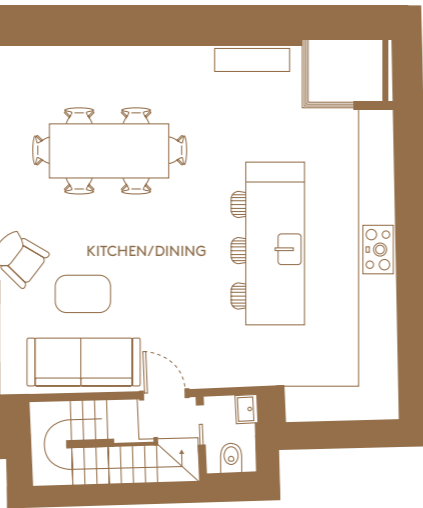
Living Room
19'9" x 20'10"
7.11m x 6.73m

Master Bedroom
11'1" x 16'5"
3.38m x 5.00m

Bedroom 1
13'9" x 9'0"
4.19m x 2.74m

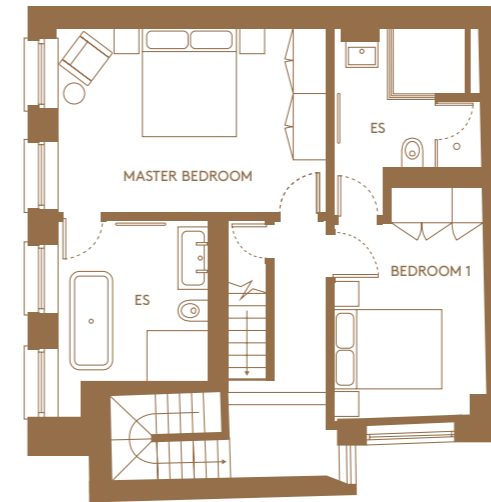
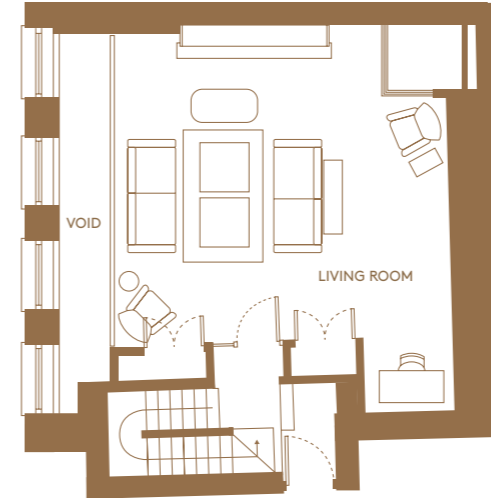
Bedroom 2
21'11" x 20'8"
6.68m x 6.30m

BASEMENT LEVEL



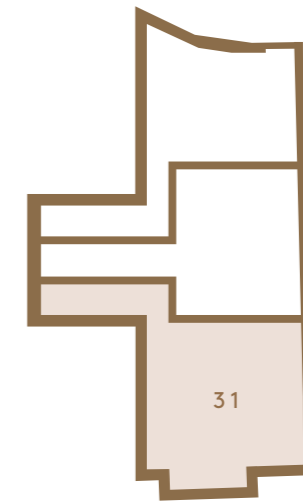
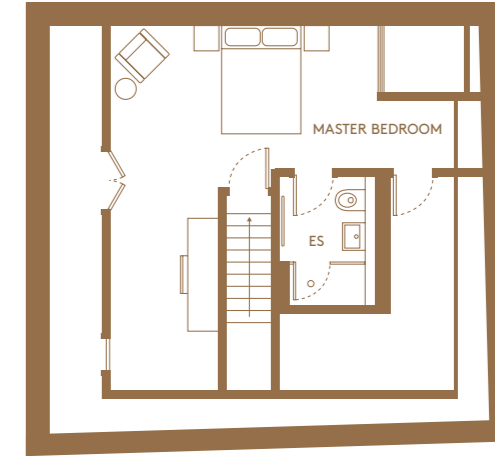
LOWER GROUND FLOOR

GROUND FLOOR



FIRST FLOOR

SECOND FLOOR



LOCATOR

SPECIFICATION



KITCHENS

Bulthaup kitchens designed in partnership with Kitchen Architecture

Full package of appliances including oven, microwave, combination oven flush induction hob, extractor, deep warming drawer, fridge, freezer and dishwasher

MASTER EN SUITES

Classic white sanitaryware by Villeroy & Boch

Walls finished in marble and polished plaster

Floors to be large format porcelain tiles

Frameless clear glass shower enclosure

Walk-in shower with rain shower head and additional wall mounted hand held shower

Bespoke vanity unit with marble top

Bespoke mirrored cabinet with integrated shaver socket, feature lighting and storage

Bard and Brazier floor mounted towel rail



FLOOR FINISHES

Fumed oak engineered flooring to hallways, living areas and secondary bedrooms

Teid 100% pure wool carpet to master bedroom

DOORS & WINDOWS

Traditional painted timber pivot windows that reflect the history of Oldbury Place

Secure painted timber entrance door

Mondrian slim framed contemporary glazed screens and lightwells

Internal doors are smooth painted with bronze ironmongery

WARDROBES

Bespoke timber veneer wardrobes incorporating hanging and storage space

Contemporary ironmongery



ELECTRICAL & LIGHTING

A selection of high quality light fittings to include:

Trimless recessed LED down lights

Antique bronze accent lighting

Flush wall wash lighting to stairs and bathrooms

Contemporary ironmongery to all sockets and light switches

Intelligent home management system to control lighting, blinds, audio visual

Cat 6 network cabling

HEATING & COOLING

Heating and hot water provided by a gas boiler and hot water cylinder

Underfloor heating throughout with individual room controls

Infrastructure only for comfort cooling



BESPOKE FINISHES

Blackened steel stairs with inlaid oak treads and blackened ebony timber handrail

High quality bespoke joinery to living area and librar

Frameless glass balustrades to living area double height space

Dru balanced flu gas fires

SECURITY

CCTV to door entrance

Mains supply smoke alarms

WARRANTY

A 10 Year warranty is provided by Premier Guarantee

Disclaimer: This brochure and the information shown does not form part of any contract, and while effort has been made to ensure accuracy, this cannot be guaranteed and no representation or warranty is made in that regard. All information is correct at the time of going to press. Each townhouse and layout is indicative only and subject to change. The specification of each townhouse is the anticipated specification at the date this brochure was prepared, but may be subject to change. Any areas, measurements or distances referred to are given as a guide only and are not precise. If such details are fundamental to a purchase, purchasers must rely on their own enquiries. Computer generated images are indicative only. Furniture shown in computer generated images is not included in sales.

shape

BOULTBEE
LDN

